

Photomicrography

Sample: Aeration tank (Mid- April 2010)

Company: ABC

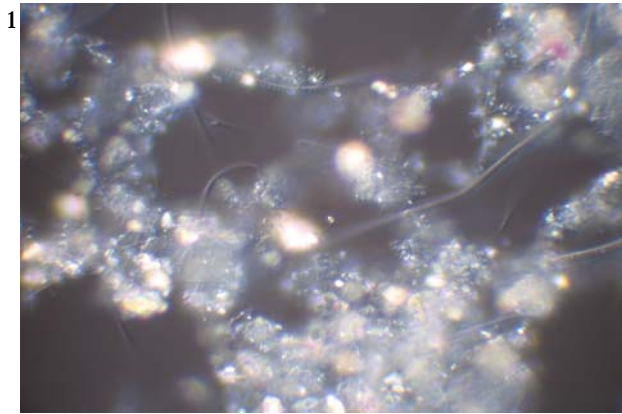
**Adress: X
Y
PO Box 123
Riyadh 456
Kingdom of Saudi Arabia**

**Contact person: Mr. S. K.
Utilities dept.**

Examiner: ir. Dirk Seghers
B-2900 Schoten
Belgium
T: + 32 (0)3 685 34 57
seghers.dirk@aquaICS.be

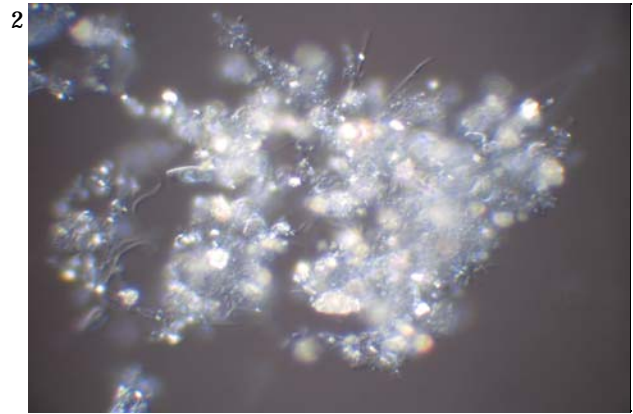
Sampling date: 16/04/2010

Examination date: 20/04/2010



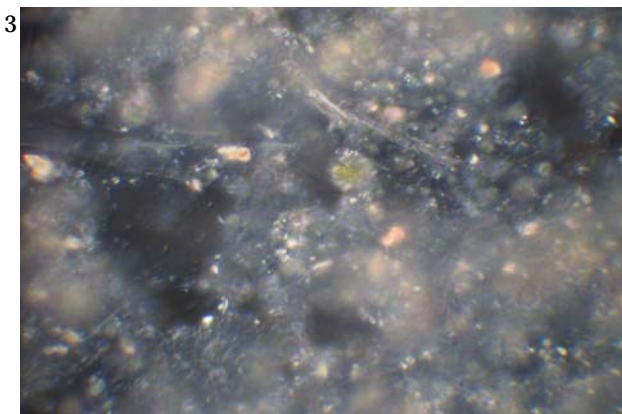
3798

DIC: 400 x: many inorganic particles on sludge



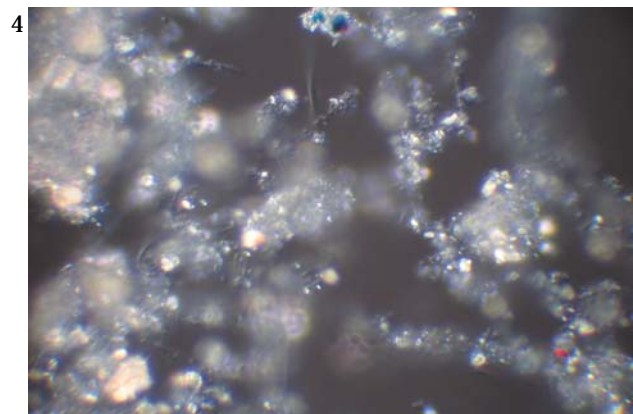
3800

DIC: 400 x: many inorganic particles on sludge



3873

DIC: 400 x: many inorganic particles on sludge



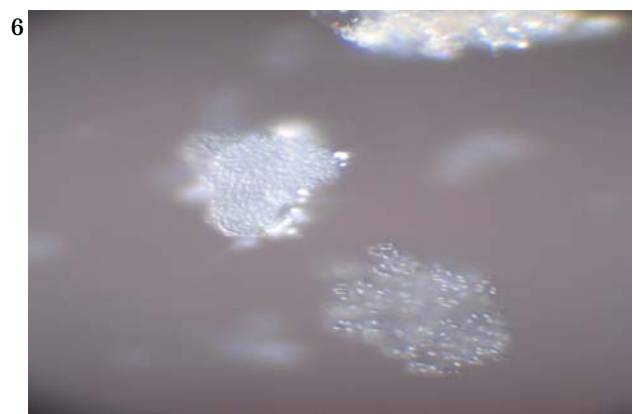
3872

DIC: 400 x: many inorganic particles on sludge



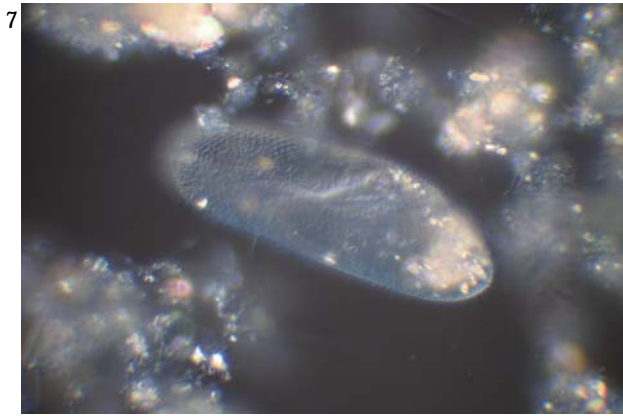
3811

DIC: 400 x: compact/dense Zoogloea spp.



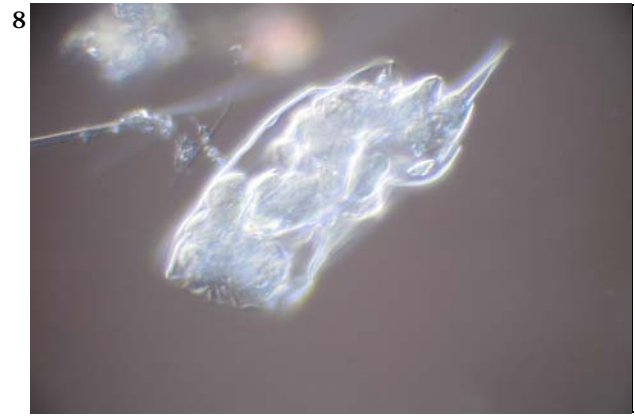
3813

DIC: 400 x: compact & open matrix Zoogloea spp.



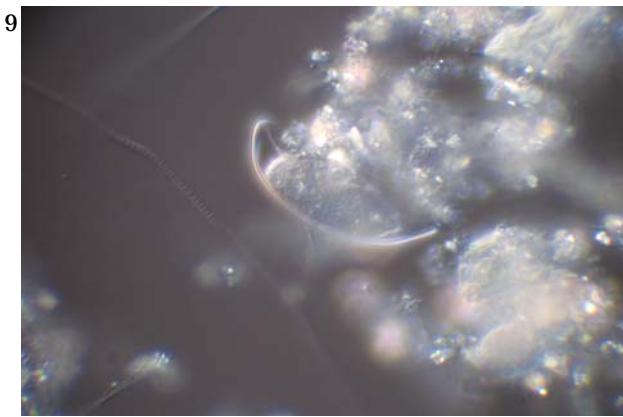
DIC: 400 x: Paramecium spp.

3793



DIC: 400 x: Rotifer

3794



DIC: 400 x: testate amoeba, side view

3795



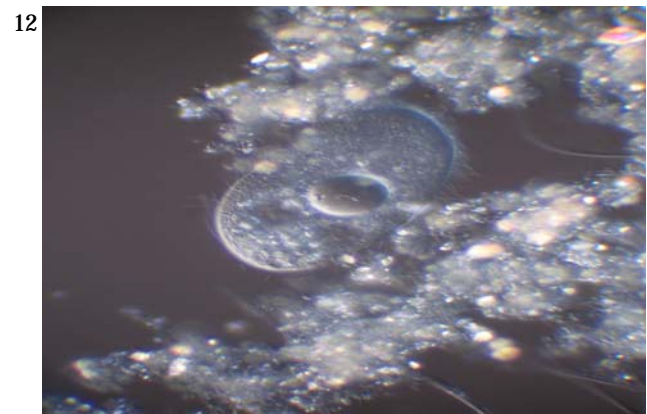
DIC: 400 x: testate amoeba, bottom view

3881



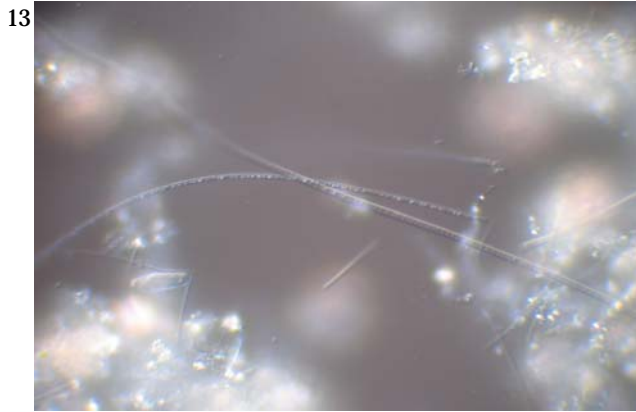
DIC: 400 x: Holotrich ciliate

3801



DIC: 400 x: Holotrich ciliate, with vacuole

3803



3796

DIC: 400 x: filamentous bacteria,
Thiotrix/type 021N & Type 0041



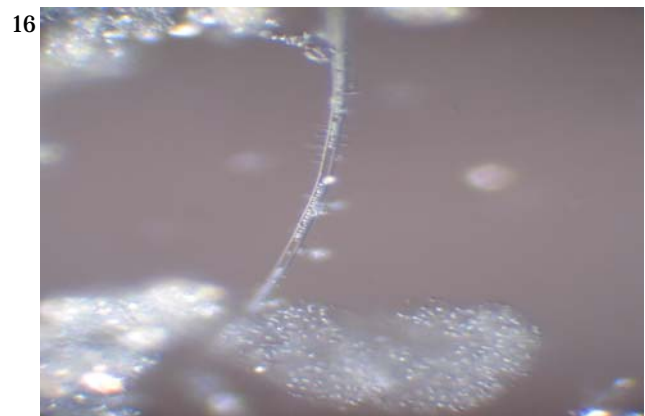
3804

DIC: 400 x: Thiotrix/type 021N



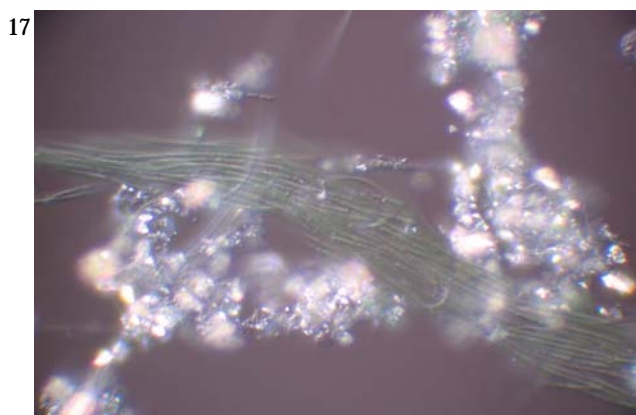
3876

DIC: 400 x: filamentous bacteria,
Type 0041



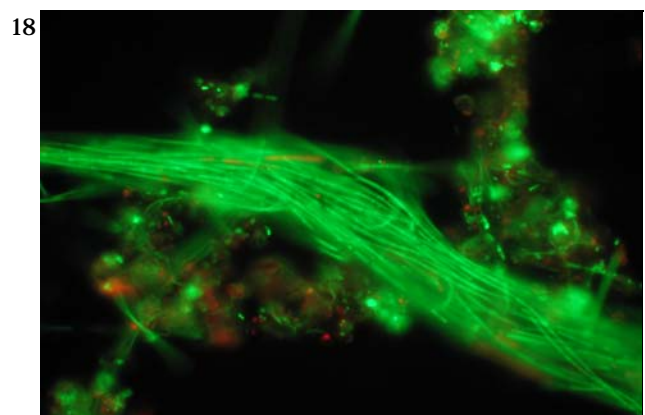
3880

DIC: 400 x: filamentous bacteria,
Thiotrix/type 021N,
Zoogloea spp.



3820

DIC: 400 x: filamentous bacteria,
Bundle of Type 1851

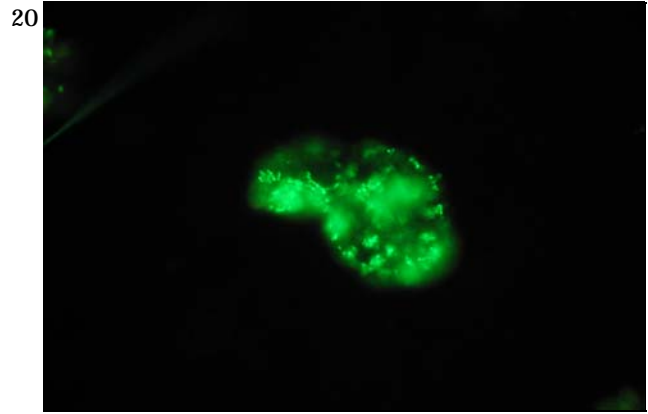


3819

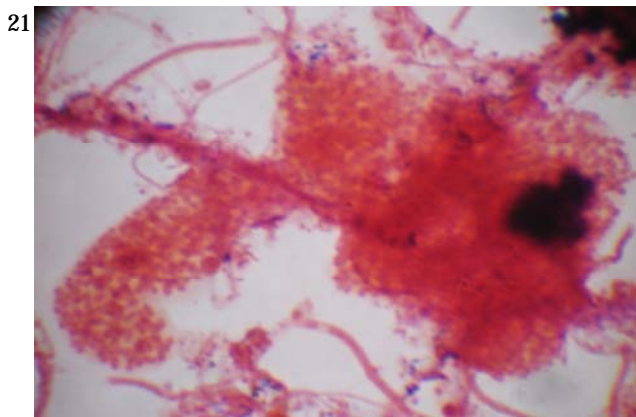
DIC: 400 x: same as left but with Epifluorescence
Bundle of Type 1851



DIC: 400 x: Zoogloea spp. cluster



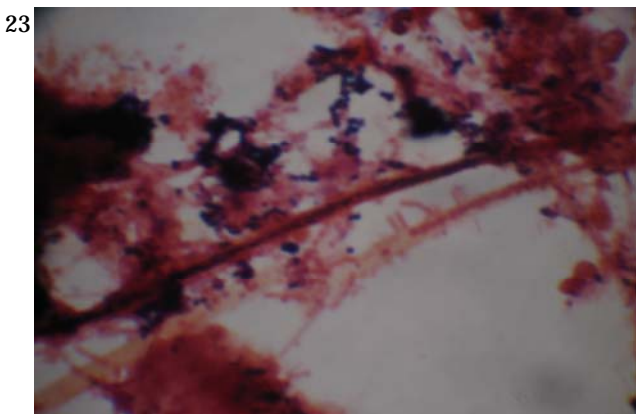
DIC: 400 x: same as left but with Epifluorescence



Brightfield : 1000 x Gram Stain
Gram neg. Zoogloea colony



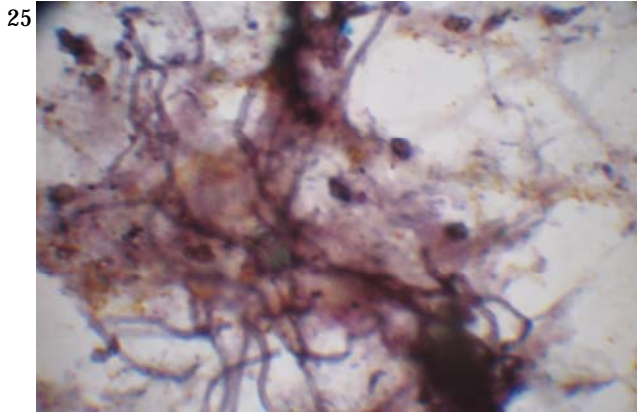
Brightfield: 1000 x: Gram stain
Gram neg. And Gram var. Filaments
Gram pos. Attached growth (spots)



Brightfield: 1000 x: Gram stain
Gram neg. And Gram pos. Filaments
Gram pos. Attached growth (spots)

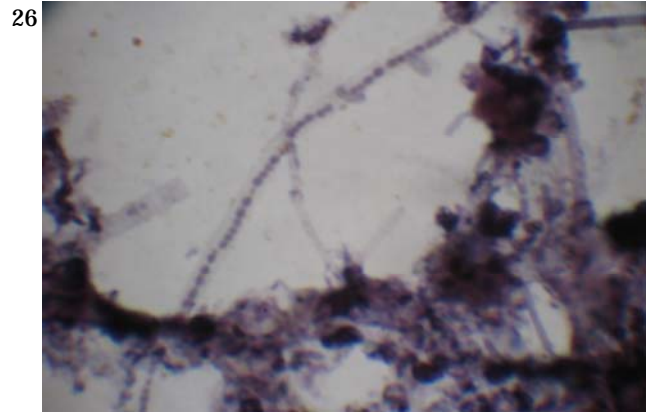


Brightfield: 1000 x: Neisser Stain
Nostocoida limicola



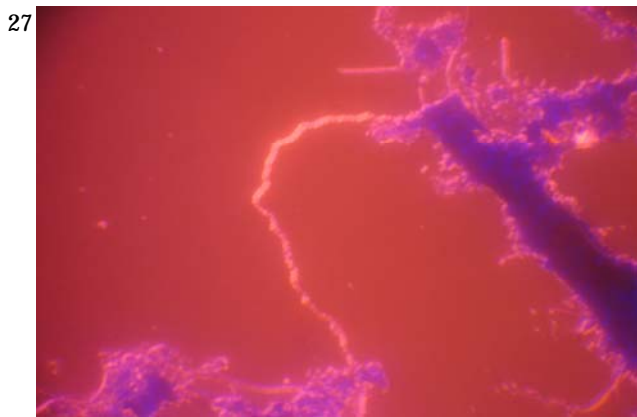
3834

Brightfield: 1000 x: Neisser Stain
Type 0092



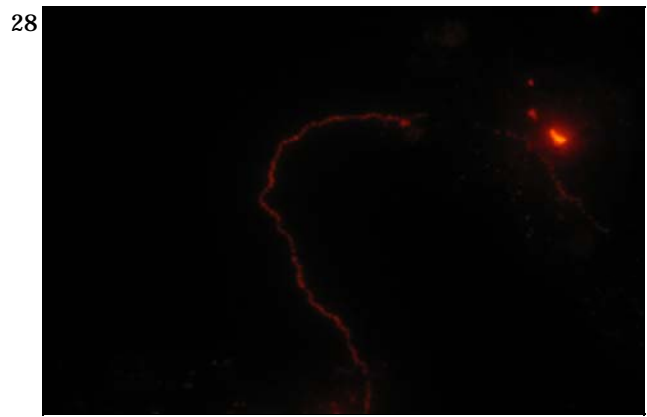
3835

Brightfield: 1000 x: Neisser Stain
Thiotrix/Type 021N



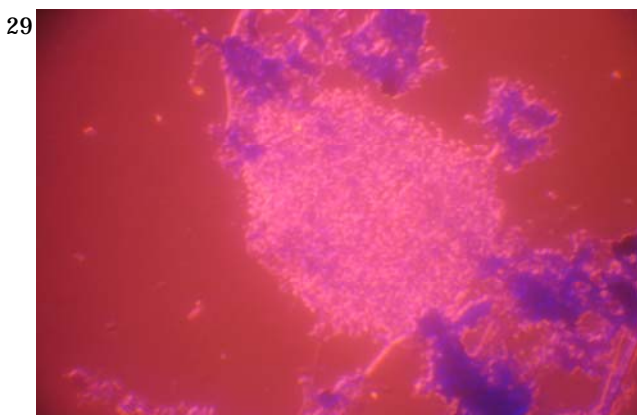
3920

Brightfield/Epi-Fl.: 400 x, PHB stain (Nile Blue)



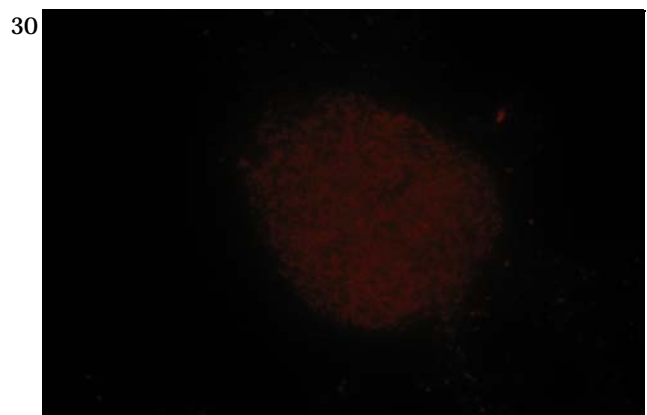
3921

Epi: 400 x, PHB stain, same as left picture
PHB containing filament



3923

Brightfield/Epi-Fl.: 400 x, PHB stain (Nile Blue)
Zoogloea spp. colony



3924

Epi: 400 x, PHB stain, same as left picture
Zoogloea contains little only PHB